



Certificate

Environmental Certificate Exterior Wall System

Environmental Certificate for Exterior Wall System
according to the Life Cycle Assessments for
Environmental Product Declarations (EPD) acc. to ISO 14025

Calculation of the CO₂ output and the primary energy consumption for the
Knauf AQUAPANEL® Exterior Wall
Project: IAL10-0356



Environmental Certificate Exterior Wall System

Abbreviated designation: Environmental Certificate
Certificate holder: Knauf Aquapanel GmbH & Co. KG
Zur Helle 11
58638 Iserlohn
Germany



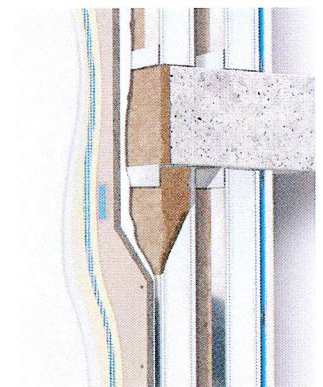
Certified system: Knauf AQUAPANEL® Exterior Wall
Project: IAL-10-0356



Content of certification: This certification describes the environmental performance of the Knauf AQUAPANEL® Exterior Wall with regard to the CO₂ output and the primary energy consumption of the construction system stated under item 'Object'. The aim is the promotion of environmentally compatible and healthy building.

The certification is based on the data and calculations for the Life Cycle Assessment (LCA) of the software and database „GaBi 4“ (PE INTERNATIONAL GmbH, Stuttgart, April 2010), according to the LCA's for Environmental Product Declarations (EPD) following ISO 14025.

Object: The drylining system Knauf AQUAPANEL® Exterior Wall is a complete solution, consisting of AQUAPANEL® Cement Board Outdoor panels and accessories for surface design, Knauf profiles, Knauf Insulation materials and Knauf Gypsum Boards, joint compounds and interior wall finishing. The basis of assessment is a Knauf AQUAPANEL® Exterior Wall in double stud construction with metal substructure, outside with a single layer of AQUAPANEL® Cement Board Outdoor and coated with AQUAPANEL® render finish as well as a layer of Knauf Gypsum Board inside. A U-value of 0.23 m²K/W was defined for the system.



Knauf AQUAPANEL® Exterior Wall W388

Result: CO₂ output 21.33 kg CO₂/m²
Primary energy consumption 48 kWh/m²

Date of issue:


Dipl.-Ing. Hans-Dieter Bossemeyer
Managing Director, WESSLING GmbH